

1003 - Quarter Turn with Cylinder GH=18

	PA
Keyed 3333	1003 - 900 - xxx
Keyed Same	1003 - 907 - xxx
Keyed Differ	1003 - 909 - xxx
Keyed Differ with Master Key	1003 - 908 - xxx

You may chose XXX section from cam tables



Quarter Turns

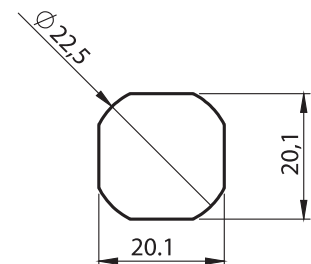
Material:

- Housing** : Polyamide (PA6 GFR30), black
- Nut** : Polyamide (PA6 GFR30), black
- Cam** : Plastic or Steel, zinc plated

Options

- Cams** : Page 84-85

Cut out



IP 44  LH/RH 