

Quarter Turns

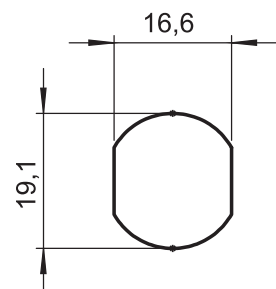
### Material

- Housing** : Zinc die, chrome plated or black coated
- Nut** : Zinc die, zinc plated
- Cam** : Steel, zinc plated

### Options

- Cams** : Page 84-85

Cut out



### 1004 - Quarter Turn with Cylinder GH=20

	Chrome Plated	Black Coated
Keyed 3333	1004 - 910 - xxx	1004 - 920 - xxx
Keyed Same	1004 - 917 - xxx	1004 - 927 - xxx
Keyed Differ with Master System	1004 - 918 - xxx	1004 - 928 - xxx

You may chose XXX section from cam tables

IP 44



LH/RH

RoHS