

Quarter Turns

Material

- Housing** : Zinc die, chrome plated or black coated
- Insert** : Zinc die, chrome plated or black coated
- Nut** : Zinc die, zinc plated

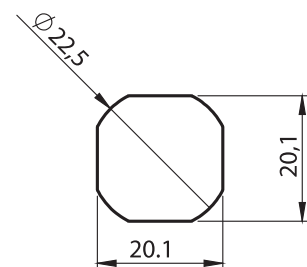
Options

Keys : Page 45

1020 - Stepped Quarter Turn

| | Insert Types | GH=30 | GH=40 | GH=50 | GH=60 |
|--|-----------------|------------|------------|------------|------------|
| | Double Bit 3 mm | 1023 - 201 | 1024 - 201 | 1025 - 201 | 1026 - 201 |
| | Double Bit 5 mm | 1023 - 202 | 1024 - 202 | 1025 - 202 | 1026 - 202 |
| | Triangular 8 mm | 1023 - 203 | 1024 - 203 | 1025 - 203 | 1026 - 203 |
| | Triangular 9 mm | 1023 - 209 | 1024 - 209 | 1025 - 209 | 1026 - 209 |
| | Square 7 mm | 1023 - 204 | 1024 - 204 | 1025 - 204 | 1026 - 204 |
| | Square 8 mm | 1023 - 205 | 1024 - 205 | 1025 - 205 | 1026 - 205 |
| | Slotted | 1023 - 208 | 1024 - 208 | 1025 - 208 | 1026 - 208 |
| | Eastern Europe | 1023 - 210 | 1024 - 210 | 1025 - 210 | 1026 - 210 |

Cut out



IP 65



LH/RH

RoHS