

Quarter Turns

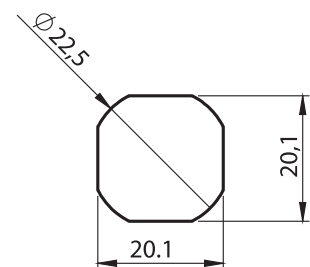
Material

- Housing** : Zinc die, chrome plated or black coated
- Insert** : Zinc die, chrome plated or black coated
- Nut** : Zinc die, zinc plated
- Cam** : Plastic or Steel, zinc plated

Options

Cams : Page 84-85

Cut out



1201 - T handle Quarter Turn GH=18

	Chrome Plated	Black Coated
Unlocking	1201 - 200 - xxx	1201 - 100 - xxx
Keyed 3333	1201 - 203 - xxx	1201 - 103 - xxx
Keyed Differ	1201 - 209 - xxx	1201 - 109 - xxx

You may chose XXX section from cam tables

IP 65



LH/RH

RoHS