

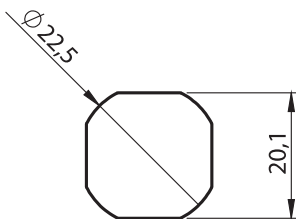
Material

- Housing** : Polyamide (PA6 GFR30), black Zinc die, chrome plated or black coated
- Insert** : Polyamide (PA6 GFR30), black Zinc die, chrome plated or black coated
- Nut** : Plastic or Zinc die, zinc plated
- Cam** : Plastic or Steel, zinc plated

Options

- Cams** : Page 84-85
- Keys** : Page 45

Cut out



1800 - Quarter Turn GH=18

	Insert Types	PA	Chrome Plated	Black Coated
	Double Bit 3 mm	1810 - 101 - xxx	1820 - 201 - xxx	1830 - 301 - xxx
	Double Bit 5 mm	1810 - 102 - xxx	1820 - 202 - xxx	1830 - 302 - xxx
	Triangular 8 mm	1810 - 103 - xxx	1820 - 203 - xxx	1830 - 303 - xxx
	Triangular 9 mm	1810 - 109 - xxx	1820 - 209 - xxx	1830 - 309 - xxx
	Square 7 mm	1810 - 104 - xxx	1820 - 204 - xxx	1830 - 304 - xxx
	Square 8 mm	1810 - 105 - xxx	1820 - 205 - xxx	1830 - 305 - xxx
	Slotted	1810 - 108 - xxx	1820 - 208 - xxx	1830 - 308 - xxx
	Eastern Europe	1810 - 110 - xxx	1820 - 210 - xxx	1830 - 310 - xxx

You may chose XXX section from cam tables

IP 65 LH/RH RoHS