

Quarter Turns

**Material**

- Housing** : Polyamide (PA6 GFR30), black
- Insert** : Polyamide (PA6 GFR30), black
- Nut** : Polyamide (PA6 GFR30), black
- Cam** : Plastic or Steel, zinc plated

**Options**

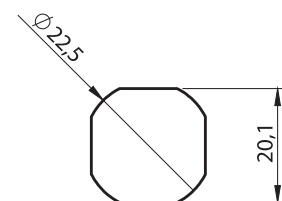
- Cams** : Page 84-85
- Keys** : Page 45

**1812 - Quarter Turn GH=15**

	Insert Types	RH	LH
	Double Bit 3 mm	1812 - 101 - xxx	1811 - 101 - xxx
	Double Bit 5 mm	1812 - 102 - xxx	1811 - 102 - xxx
	Triangular 8 mm	1812 - 103 - xxx	1811 - 103 - xxx
	Triangular 9 mm	1812 - 109 - xxx	1811 - 109 - xxx
	Square 7 mm	1812 - 104 - xxx	1811 - 104 - xxx
	Square 8 mm	1812 - 105 - xxx	1811 - 105 - xxx
	Slotted	1812 - 108 - xxx	1811 - 108 - xxx
	Eastern Europe	1812 - 110 - xxx	1811 - 110 - xxx

You may chose XXX section from cam tables

**Cut out**



IP 65 RH LH RoHS