

Due to the nose on the housing, for unlocking, it is necessary to push and turn the quarter turn. It cannot be open by vibration.



Material

- Housing** : Zinc die, chrome plated or black coated
- Insert** : Zinc die, chrome plated or black coated
- Nut** : Zinc die, zinc plated
- Cam** : Plastic or Steel, zinc plated

Options

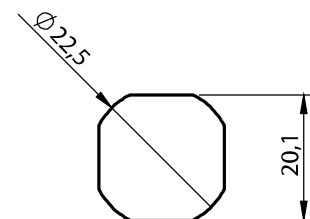
- Cams** : Page 84-85
- Keys** : Page 45

1842 - Secure Quarter Turn GH=18

	Insert Types	Chrome Plated	Black Coated
	Double Bit 3 mm	1842 - 201 - xxx	1852 - 301 - xxx
	Double Bit 5 mm	1842 - 202 - xxx	1852 - 302 - xxx
	Triangular 8 mm	1842 - 203 - xxx	1852 - 303 - xxx
	Triangular 9 mm	1842 - 209 - xxx	1852 - 309 - xxx
	Square 7 mm	1842 - 204 - xxx	1852 - 304 - xxx
	Square 8 mm	1842 - 205 - xxx	1852 - 305 - xxx
	Slotted	1842 - 208 - xxx	1852 - 308 - xxx
	Eastern Europe	1842 - 210 - xxx	1852 - 310 - xxx

You may chose XXX section from cam tables

Cut out



IP 65



LH/RH

RoHS